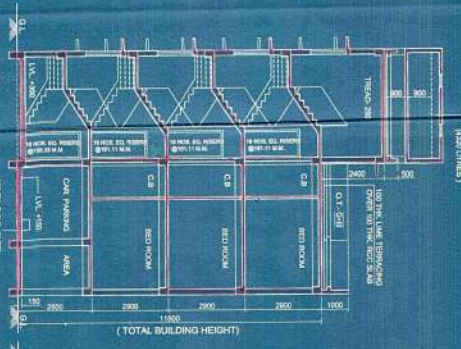
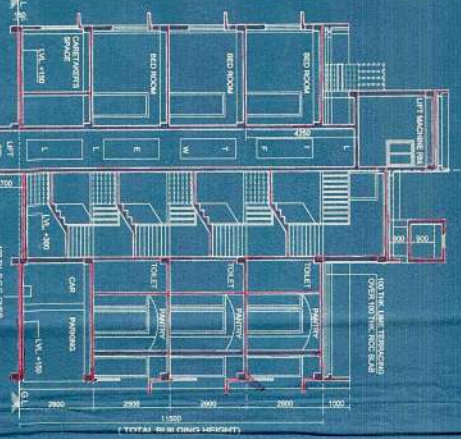


FRONT ELEVATION
SCALE: 1:100



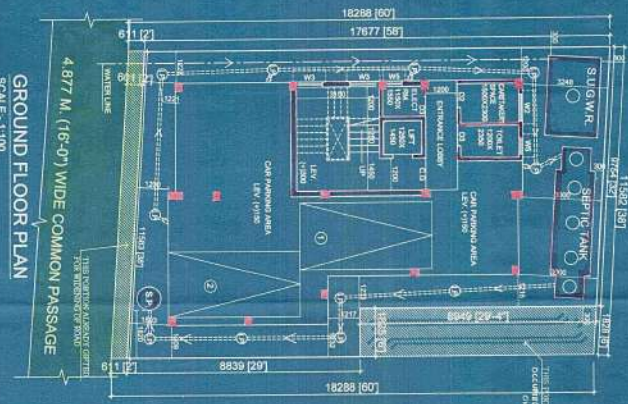
SECTION - AA
SCALE: 1:100



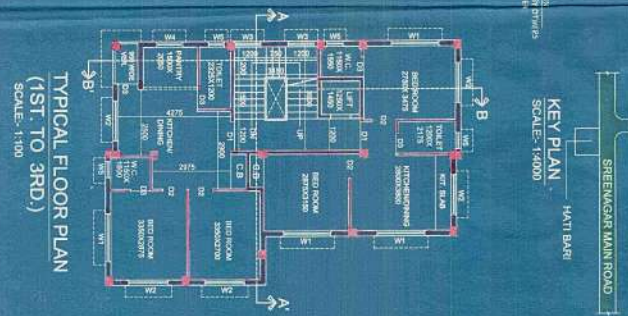
SECTION - BB
SCALE: 1:100



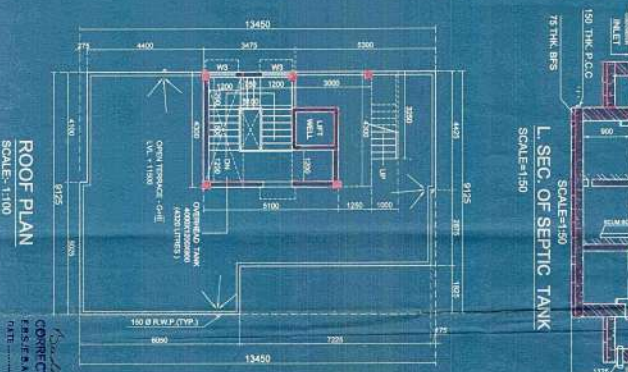
SITE PLAN
SCALE: 1:400



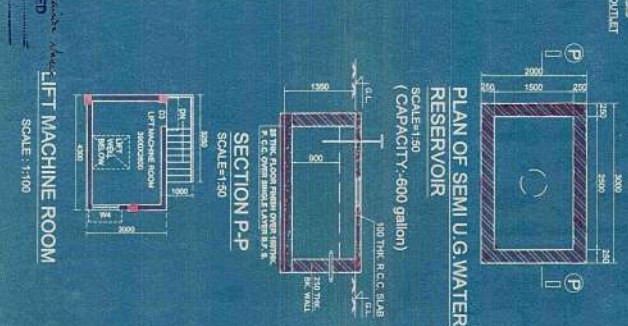
GROUND FLOOR PLAN
SCALE: 1:100



TYPICAL FLOOR PLAN
(1ST TO 3RD)
SCALE: 1:100



ROOF PLAN
SCALE: 1:100



LIFT MACHINE ROOM
SCALE: 1:100

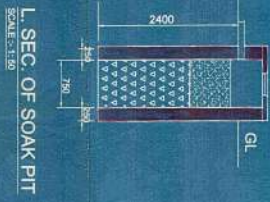
DOOR MKD	WIDTH	HEIGHT	WINDOW MKD	WIDTH	HEIGHT
D1	1050	2100	W1	1650	1350
D2	900	2100	W2	1500	1350
D3	750	2100	W3	1000	1350
C.C.	1500	2100	W4	1000	1000
			W5	600	600

SPECIFICATION

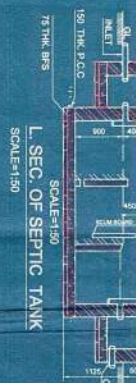
1. ALL DIMENSIONS ARE IN MM UNLESS OTHERWISE STATED.
2. DOTTED OR DASHED LINE OR SPRING LINE WILL NOT EXCEED THE SPACING OF DIMENSIONS.
3. ALL EXTERIOR WALLS ARE 200 MM THICK UNLESS OTHERWISE SPECIFIED.
4. ALL INTERIOR PARTITION WALLS ARE 125 MM THICK & 150 MM THICK WITH 1:4 CONCRETE SAND MORTAR.
5. FINISHES ARE AS SPECIFIED IN THE SCHEDULE.
6. FLOORING WITH CERAMIC TILES SHALL BE 1:4 FOR R.C.C. WORK & 1:6 FOR BRICK WORK.
7. PLUMBING WORK SHALL BE AS PER THE SCHEDULE.
8. ALL PROPOSED DETAILS ARE AS PER THE SCHEDULE.



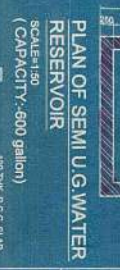
PLAN



L. SEC. OF SOAK PIT
SCALE: 2:1.20



L. SEC. OF SEPTIC TANK
SCALE: 1:50



PLAN OF SEMI U.G. WATER RESERVOIR
SCALE: 1:50
(CAPACITY: 600 gallon)



SECTION P.P.
SCALE: 1:30

STATEMENT OF THE PLAN PROPOSAL :-

1. AREA OF THE LAND
36.20x30 SQ.M = 211.80 SQ.M (AS PER DEED)

2. PERMISSIBLE FAR
186.148 SQ.M (AS PER SITE. EXCL. STRIP & OCCUPIED AREA)

3. PERMISSIBLE GROUND COVERAGE
17.5%

4. PROPOSED GROUND COVERAGE
107.596 SQ.M = 51.81%

5. PERMISSIBLE TOTAL BUILT UP AREA
181.484 SQ.M = 85.64% (2007) SQ.M

6. PROPOSED FLOOR AREA
423.824 SQ.M

7. PROPOSED AREA DETAILS

FLOOR	FLOOR AREA (SQ.M)	STAIRCASE AREA (SQ.M)	NET FLOOR AREA (SQ.M)
GROUND FLOOR	107.266	12.285	94.981
1ST FLOOR	104.658	11.980	92.678
2ND FLOOR	104.658	11.980	92.678
3RD FLOOR	104.658	11.980	92.678
TOTAL	421.570	48.785	382.005

DECLARATION

THE STRUCTURAL DESIGN AND DRAWING OF BOTH EXTERIOR AND INTERIOR PARTS OF THE BUILDING HAS BEEN MADE BY ME CONSIDERING ALL POSSIBLE LOADS INCLUDING THE EARTHQUAKE AND THE APPLICABLE BUILDING CODE OF INDIA AND CERTIFIED THAT IT IS SAFE AND SOUND IN ALL RESPECTS.

12. F.A.R. CONSIDERED
421.570 x 1.25 (52.69625) = 527.464

13. NO. OF CAR PARKING SPACES PROVIDED
2 NOS

14. NO. OF CAR PARKING SPACES PROVIDED
2 NOS

15. TOTAL AREA OF STAIRS & LOBBY
48.785 SQ.M

16. TOTAL RESIDENTIAL AREA
370.055 SQ.M = 27.64 SQ.M

17. NO. OF CAR PARKING SPACES PROVIDED
2 NOS

18. F.A.R. CONSIDERED
421.570 x 1.25 (52.69625) = 527.464

SIGNATURE OF E.S.E.

SIGNATURE OF E.B.A.

SCALE -
1:50
1:100
1:400
1:4000

COMMENTS:
M.S. CONSULTANT

APPROVED
18/02/2024/10/15/1
14/11/2024

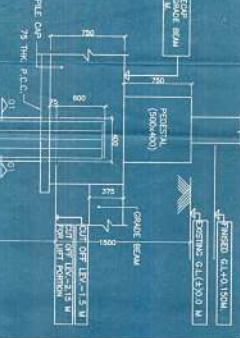
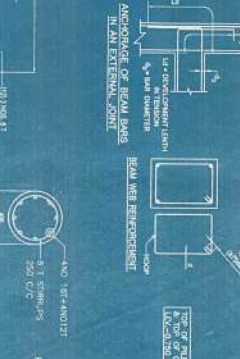
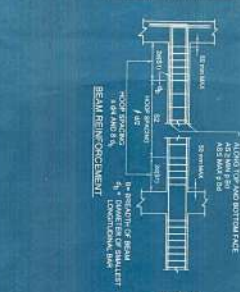
APPROVED
18/02/2024/10/15/1
14/11/2024

APPROVED
18/02/2024/10/15/1
14/11/2024

APPROVED
18/02/2024/10/15/1
14/11/2024

BEAM	SYMBOL	SECTION	DEPTH	SPACING	REMARKS
B1	100/200	100/200	200	100	
B2	100/200	100/200	200	100	
B3	100/200	100/200	200	100	
B4	100/200	100/200	200	100	
B5	100/200	100/200	200	100	
B6	100/200	100/200	200	100	
B7	100/200	100/200	200	100	
B8	100/200	100/200	200	100	
B9	100/200	100/200	200	100	
B10	100/200	100/200	200	100	
B11	100/200	100/200	200	100	
B12	100/200	100/200	200	100	
B13	100/200	100/200	200	100	
B14	100/200	100/200	200	100	
B15	100/200	100/200	200	100	
B16	100/200	100/200	200	100	
B17	100/200	100/200	200	100	
B18	100/200	100/200	200	100	
B19	100/200	100/200	200	100	
B20	100/200	100/200	200	100	
B21	100/200	100/200	200	100	
B22	100/200	100/200	200	100	
B23	100/200	100/200	200	100	
B24	100/200	100/200	200	100	
B25	100/200	100/200	200	100	
B26	100/200	100/200	200	100	
B27	100/200	100/200	200	100	
B28	100/200	100/200	200	100	
B29	100/200	100/200	200	100	
B30	100/200	100/200	200	100	
B31	100/200	100/200	200	100	
B32	100/200	100/200	200	100	
B33	100/200	100/200	200	100	
B34	100/200	100/200	200	100	
B35	100/200	100/200	200	100	
B36	100/200	100/200	200	100	
B37	100/200	100/200	200	100	
B38	100/200	100/200	200	100	
B39	100/200	100/200	200	100	
B40	100/200	100/200	200	100	
B41	100/200	100/200	200	100	
B42	100/200	100/200	200	100	
B43	100/200	100/200	200	100	
B44	100/200	100/200	200	100	
B45	100/200	100/200	200	100	
B46	100/200	100/200	200	100	
B47	100/200	100/200	200	100	
B48	100/200	100/200	200	100	
B49	100/200	100/200	200	100	
B50	100/200	100/200	200	100	
B51	100/200	100/200	200	100	
B52	100/200	100/200	200	100	
B53	100/200	100/200	200	100	
B54	100/200	100/200	200	100	
B55	100/200	100/200	200	100	
B56	100/200	100/200	200	100	
B57	100/200	100/200	200	100	
B58	100/200	100/200	200	100	
B59	100/200	100/200	200	100	
B60	100/200	100/200	200	100	
B61	100/200	100/200	200	100	
B62	100/200	100/200	200	100	
B63	100/200	100/200	200	100	
B64	100/200	100/200	200	100	
B65	100/200	100/200	200	100	
B66	100/200	100/200	200	100	
B67	100/200	100/200	200	100	
B68	100/200	100/200	200	100	
B69	100/200	100/200	200	100	
B70	100/200	100/200	200	100	
B71	100/200	100/200	200	100	
B72	100/200	100/200	200	100	
B73	100/200	100/200	200	100	
B74	100/200	100/200	200	100	
B75	100/200	100/200	200	100	
B76	100/200	100/200	200	100	
B77	100/200	100/200	200	100	
B78	100/200	100/200	200	100	
B79	100/200	100/200	200	100	
B80	100/200	100/200	200	100	
B81	100/200	100/200	200	100	
B82	100/200	100/200	200	100	
B83	100/200	100/200	200	100	
B84	100/200	100/200	200	100	
B85	100/200	100/200	200	100	
B86	100/200	100/200	200	100	
B87	100/200	100/200	200	100	
B88	100/200	100/200	200	100	
B89	100/200	100/200	200	100	
B90	100/200	100/200	200	100	
B91	100/200	100/200	200	100	
B92	100/200	100/200	200	100	
B93	100/200	100/200	200	100	
B94	100/200	100/200	200	100	
B95	100/200	100/200	200	100	
B96	100/200	100/200	200	100	
B97	100/200	100/200	200	100	
B98	100/200	100/200	200	100	
B99	100/200	100/200	200	100	
B100	100/200	100/200	200	100	

SCHEDULE OF FOUNDATION BEAM		SCHEDULE OF COLUMN	
NO.	SECTION	NO.	SECTION
1	100/200	1	100/200
2	100/200	2	100/200
3	100/200	3	100/200
4	100/200	4	100/200
5	100/200	5	100/200
6	100/200	6	100/200
7	100/200	7	100/200
8	100/200	8	100/200
9	100/200	9	100/200
10	100/200	10	100/200
11	100/200	11	100/200
12	100/200	12	100/200
13	100/200	13	100/200
14	100/200	14	100/200
15	100/200	15	100/200
16	100/200	16	100/200
17	100/200	17	100/200
18	100/200	18	100/200
19	100/200	19	100/200
20	100/200	20	100/200
21	100/200	21	100/200
22	100/200	22	100/200
23	100/200	23	100/200
24	100/200	24	100/200
25	100/200	25	100/200
26	100/200	26	100/200
27	100/200	27	100/200
28	100/200	28	100/200
29	100/200	29	100/200
30	100/200	30	100/200
31	100/200	31	100/200
32	100/200	32	100/200
33	100/200	33	100/200
34	100/200	34	100/200
35	100/200	35	100/200
36	100/200	36	100/200
37	100/200	37	100/200
38	100/200	38	100/200
39	100/200	39	100/200
40	100/200	40	100/200
41	100/200	41	100/200
42	100/200	42	100/200
43	100/200	43	100/200
44	100/200	44	100/200
45	100/200	45	100/200
46	100/200	46	100/200
47	100/200	47	100/200
48	100/200	48	100/200
49	100/200	49	100/200
50	100/200	50	100/200
51	100/200	51	100/200
52	100/200	52	100/200
53	100/200	53	100/200
54	100/200	54	100/200
55	100/200	55	100/200
56	100/200	56	100/200
57	100/200	57	100/200
58	100/200	58	100/200
59	100/200	59	100/200
60	100/200	60	100/200
61	100/200	61	100/200
62	100/200	62	100/200
63	100/200	63	100/200
64	100/200	64	100/200
65	100/200	65	100/200
66	100/200	66	100/200
67	100/200	67	100/200
68	100/200	68	100/200
69	100/200	69	100/200
70	100/200	70	100/200
71	100/200	71	100/200
72	100/200	72	100/200
73	100/200	73	100/200
74	100/200	74	100/200
75	100/200	75	100/200
76	100/200	76	100/200
77	100/200	77	100/200
78	100/200	78	100/200
79	100/200	79	100/200
80	100/200	80	100/200
81	100/200	81	100/200
82	100/200	82	100/200
83	100/200	83	100/200
84	100/200	84	100/200
85	100/200	85	100/200
86	100/200	86	100/200
87	100/200	87	100/200
88	100/200	88	100/200
89	100/200	89	100/200
90	100/200	90	100/200
91	100/200	91	100/200
92	100/200	92	100/200
93	100/200	93	100/200
94	100/200	94	100/200
95	100/200	95	100/200
96	100/200	96	100/200
97	100/200	97	100/200
98	100/200	98	100/200
99	100/200	99	100/200
100	100/200	100	100/200



NOTES & SPECIFICATIONS

1. ALL REINFORCEMENT SHALL BE AS PER IS: 1786 PART I & PART II.

2. ALL REINFORCEMENT SHALL BE PROVIDED WITH PROPER BENDS AND ANCHORAGE AS PER IS: 1786 PART I & PART II.

3. ALL REINFORCEMENT SHALL BE PROVIDED WITH PROPER BENDS AND ANCHORAGE AS PER IS: 1786 PART I & PART II.

4. ALL REINFORCEMENT SHALL BE PROVIDED WITH PROPER BENDS AND ANCHORAGE AS PER IS: 1786 PART I & PART II.

5. ALL REINFORCEMENT SHALL BE PROVIDED WITH PROPER BENDS AND ANCHORAGE AS PER IS: 1786 PART I & PART II.

6. ALL REINFORCEMENT SHALL BE PROVIDED WITH PROPER BENDS AND ANCHORAGE AS PER IS: 1786 PART I & PART II.

7. ALL REINFORCEMENT SHALL BE PROVIDED WITH PROPER BENDS AND ANCHORAGE AS PER IS: 1786 PART I & PART II.

8. ALL REINFORCEMENT SHALL BE PROVIDED WITH PROPER BENDS AND ANCHORAGE AS PER IS: 1786 PART I & PART II.

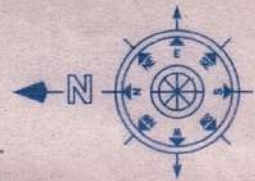
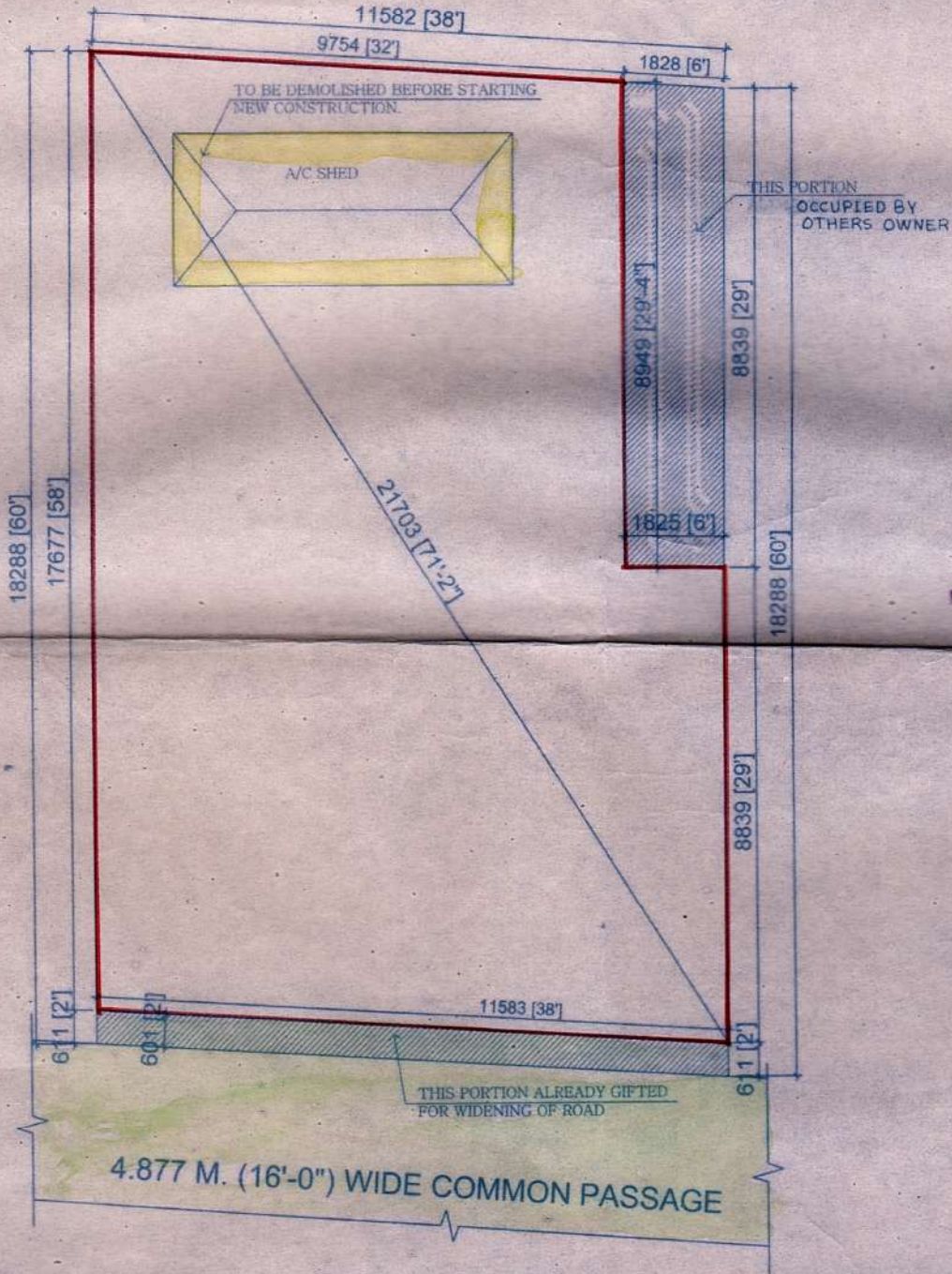
9. ALL REINFORCEMENT SHALL BE PROVIDED WITH PROPER BENDS AND ANCHORAGE AS PER IS: 1786 PART I & PART II.

10. ALL REINFORCEMENT SHALL BE PROVIDED WITH PROPER BENDS AND ANCHORAGE AS PER IS: 1786 PART I & PART II.

**SITE OF PLAN OF PLOT
 AT HOLDING NO.1445 , DHALUA MADHYA , MOUZA DHALUA,
 R.S. DAG NO. 107 (P) ,R.S. KHATIAN NO.-188 ,J.L.NO. 43 ,
 WARD NO.- 02 , P.S. SONARPUR, DIST. - 24 PGS(S) ,
 UNDER RAJPUR SONARPUR MUNICIPALITY.**

AREA OF THE LAND : 3K-2CH-30 SQFT. = 211.817 SQ.M. (AS PER DEED)
 188.148 SQ.M. (AS PER SITE , EXCL. STRIP & OCCUPIED AREA)

SCALE 1:100



THIS LAND IS MEASURED BY ME ALL ADJACENT ROADS AND MEASUREMENTS ARE MARKED.

Buddhiswar Naska
BUDDHISWAR NASKAR
 Civil Engineer
 E.B.S. Class - I
 L.C. No. 519
 Rajpur-Sonarpur Municipality

SIGNATURE OF E.B.A.

THIS LAND IS NOW IN MY POSSESSION. IT IS FREE FROM ALL ENCUMBRANCE.

ORTEM CREDIT PRIVATE LIMITED
Anurag Kumar
 Director

SIGNATURE OF OWNER

FOR OFFICE USE

APPROVED
 Plan No. *1493/08/02/51*
San 20/9/14 *5/11/14*
 Sub. Asst. Engineer Municipal Engineer
 RAJPUR SONARPUR MUNICIPALITY